

AWG	mm ²
30	0.05
28	0.08
26	0.14
24	0.25
22	0.34
21	0.38
18	0.75
17	1.0
16	1.5
14	2.5
12	4
10	6
8	10
6	16
4	25
2	35
1	50
2/0	70
3/0	95
4/0	120
300CMH	185
350CMH	240

[illegible]



The Comus Group of Companies

What type are you looking for?.....

Magnetic Reed Switch Proximity Switches



Rectangular Plastic



Rectangular Metal



Threaded Plastic



Cylindrical Plastic



Threaded Metal

.....use this catalogue.

Magnetic Reed Switch Proximity Switches with integrated connectors



6mm Threaded



18mm Threaded



12mm Threaded



Connector Cable options

.....use Proximity Switches with integrated connectors catalogue.

Solid State Hall Effect (Electronic) Proximity Switches



Rectangular Plastic



Rectangular Metal



Threaded Plastic



Threaded Metal

.....use Electronic Proximity Switches catalogue.

Economy Proximity Switches



A range of Economy grade Proximity Switches

.....use Economy Proximity Switches catalogue.

All dimensions are nominal, in millimetres unless otherwise stated. If further information is required, individual datasheets are available on our websites, and on CD. As part of the groups policy of continued product improvement, specifications may change without notice. Our sales office will be pleased to help you with the latest information on our products.



The Comus Group of Companies

The Comus International group of companies consists of:



Comus International
454 Allwood Road
Clifton
New Jersey 07012
U.S.A

Tel: (1)973 - 777 - 6900
Fax: (1)973 - 777 - 8405
email: info@comus-intl.com
internet: <http://www.comus-intl.com>



Comus International SARL
Immeuble 'Les Juilliottes'
31 Cours des Juilliottes
F-94700 Maisons-Alfort
France

Tel: +33 (0)1 43 96 86 10
Fax: +33 (0)1 43 96 86 11
email: info@comus.fr
internet: <http://www.comus.fr>



Assemtech Europe Limited
Unit 7, Rice Bridge Industrial Estate
Thorpe - Le - Soken
Essex
England
CO16 0HL
Tel: +44 (0)1255 862236
Fax: +44 (0)1255 862014
email: sales@assemtech.co.uk
internet: <http://www.assemtech.co.uk>



Comus Belgium BVBA
Overhaalmaan 40
B-3700 Tongeren
Belgium

Tel: +32 (0)12 390400
Fax: +32 (0)12 235754
email: info@comus.be
internet: <http://www.comus.be>



Comus Electronics and Technologies
India Private Limited
No 26, Crescent Park Street
T Nagar
Chennai 600 017
India
Tel: +91 44 42127124
Fax: +91 44 42127125
email: venkatraman@comus-intl.com
syed@comus-intl.com
internet: <http://www.comusindia.com>

We also have a large network of worldwide agents. These can be seen on any of our websites, or on our company profile brochure.

Com/2/jul07/Iss.2



The Comus Group of Companies

Proximity Switches



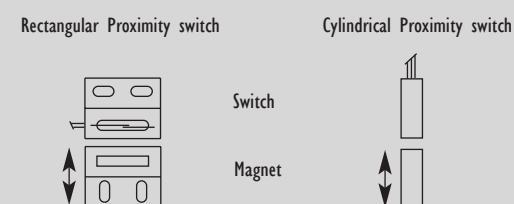
The Comus Group of Companies

DESCRIPTION

Reed Proximity Switches are operated by a moving magnet and can be used to detect many directions of movement. When the magnet reaches the operate distance from the reed switch, the reed switch contacts will operate (open or close). Moving the magnet away will cause the reed switch contacts to switch back to their original position.

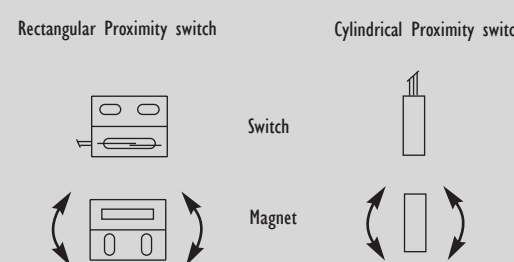
OPERATION - Perpendicular

A magnet moved perpendicularly towards and away from a switch operates the switch off and on once.



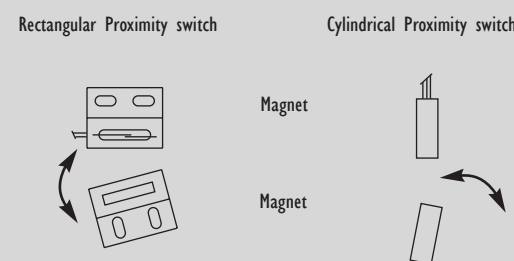
OPERATION - Rotation

A magnet rotated through 360 degrees will operate the switch contacts at least twice in one cycle.



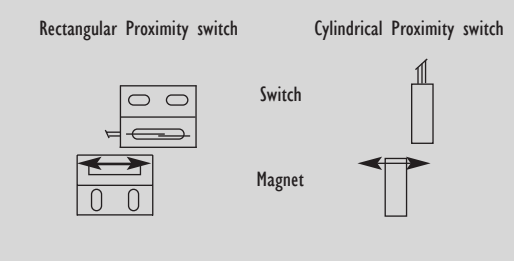
OPERATION - Swung

A magnet moved perpendicularly towards and away from a switch operates the switch off and on once.

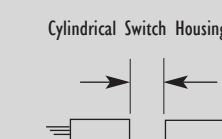
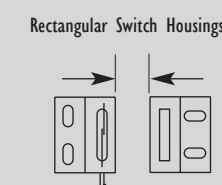


OPERATION - Parallel

A magnet moving parallel to the switch will operate the switch contacts off and on, one to three times.



SWITCHING OR OPERATING DISTANCE



The switching distances shown in this catalogue are typical using the suggested magnets. The distance can be changed by using a different magnet. Contact Sales Office for further details.

Contact Protection

Further information on contact protection and the effects of Inductive and Capacitive loads is detailed in the Reed Switch Catalogue. Contact our sales office for your free copy.

Electrical Loads

Switch ratings are normally specified for AC resistive loads. Inductive and fast switch cycles will affect the life of the switch. The electrical life expectancy of a reed switch is typically at least 1 million operations at nominal load. Mechanical life is 100 million operations. See reed switch catalogue for more information.

All dimensions are nominal, in millimetres unless otherwise stated. If further information is required, individual datasheets are available on our websites, and on CD. As part of the groups policy of continued product improvement, specifications may change without notice. Our sales office will be pleased to help you with the latest information on our products.